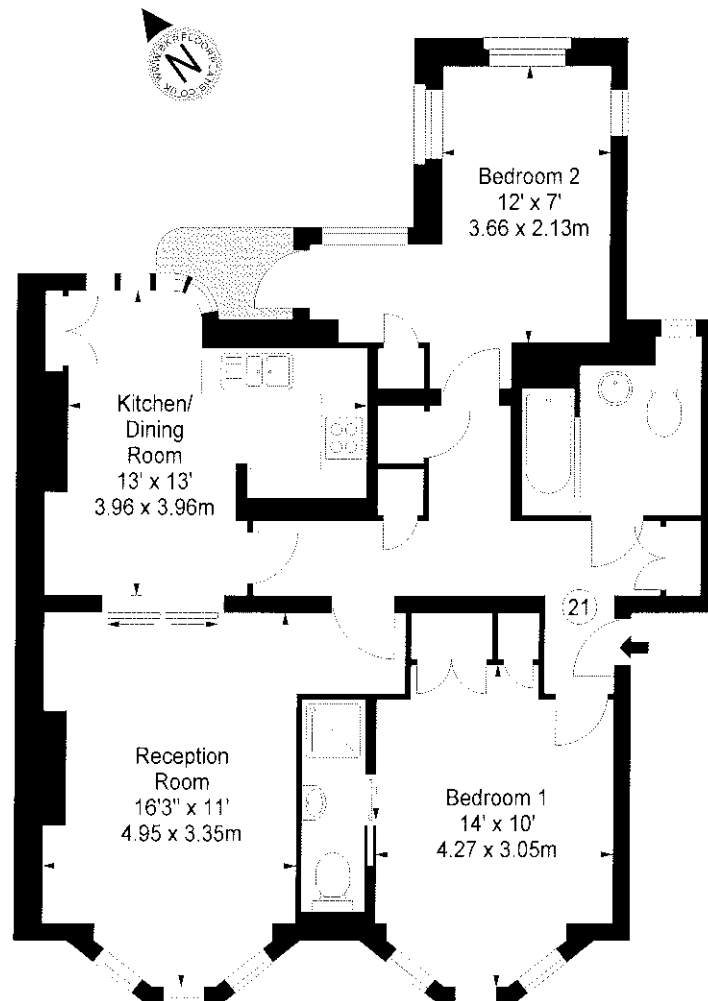


**Flat 21,
Kew Bridge Court, W4**
Approx. Gross Internal Area *
819 Ft² - 76.09 M²



First Floor

Illustration For Identification Purposes Only. Not to Scale

* As Defined by RICS - Code of Measuring Practice

BKR
FLOORPLANS

(OFFICES THROUGHOUT THE UK)

T: 0845 257 2023
WWW.BKRFLOORPLANS.CO.UK
2007